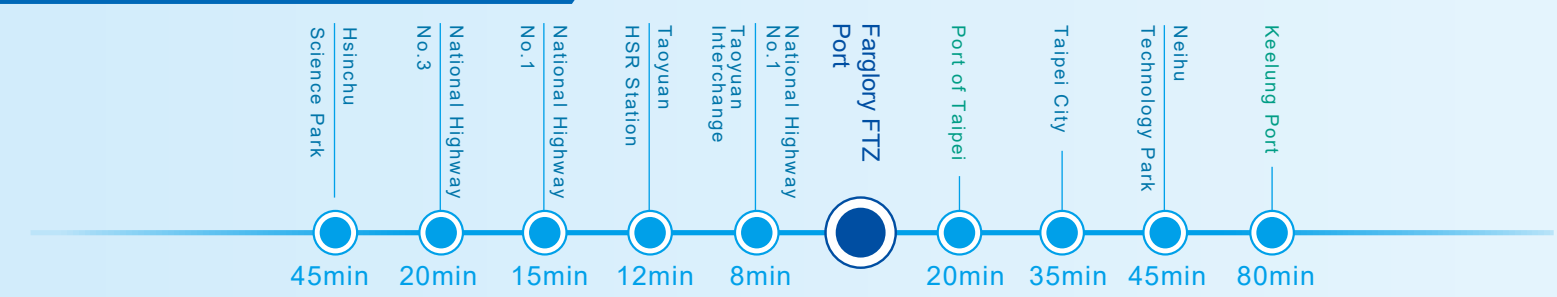


Excellent geographical location
Important gate of Taiwan
Duo ports lead to win-win



LEAD TAIWAN TO THE WORLD



The developed land of Taoyuan Aerotropolis Project was over 4,564 hectares, which will construct Taoyuan Aerotropolis as below:

Airport zone
(Egg yolk zone)

New FTZ Port
The convenient transportation of the port and incentive policies help attract more domestic and international enterprises to set up business, leading to the growth of cargo volume. More importantly, it brings great benefits in industrial transformation, increase of added-value and expansion of overseas markets.

The 3rd Terminal, the 3rd Runway and New Cargo Park
Taoyuan International Airport is located at the international logistic hub and serves as a core strategic function of connecting with Asia-Pacific cities. In the “Taoyuan Aerotropolis Project,” urban-planning helps airpart adjust the use of the surrounding land, build new terminals, keep take off and landing performance to meet the growth of the passenger volume, improve the competitiveness of Taoyuan International Airport, boost the development of Taoyuan holistically and facilitate Taiwan industrial transformation and internationalization.

(Egg white zone)
Industrial zone and living area

Considering the location of the Airport and the industrial ecology of Taoyuan City as well as the nature of industries in Hsinchu and Taipei, aerospace technology, warehousing and logistics, green energy, smart vehicles, bio-medical technology and cloud industry will cluster naturally to create economic benefits. In addition, the equipment required by the industries have been installed in the industrial zone to make the city more competitive.

Farglory Free Trade Zone

Multiple service from air freight to cargo service, express cargo, cold chain and the FTZ port

Development Overview

Nowadays, 34 companies have set up offices in the FTZ. 18 of them are cross-country enterprises and 4 of them have re-shored business while 7 are foreign profit-seeking enterprises that enjoy exemption of business income tax for foreign goods. More adjustments will be made based on Taiwan’ s industrial ecology to integrate air and marine transportation mode and the shipping needs to build FTZ port with high logistic efficiency and multiple functions to serve as a crucial trade hub in the Asia-Pacific region.

Introduction of the Port

Land area: 45 hectares
Floor area: 250,000 ping
Position: special economic zone within national territory but outside customs line
Incentives: exemptions from inspection, examination and tax
Job opportunities: more than 10,000
Expected cargo volume: 1 million tons or above

5 Exclusive Advantages

- Exemptions from inspection, examination and tax, All transportation for land, marine and air
- Professional evaluation during the entire process and assistance with obtaining certificates
- Value-added trade logistics, 24/7 operations
- Self-management , remote surveillance by customs
- Well development and complete life functions

Sales gallery: 1F., No. 9, Building C, Hangxiang Rd., Dayuan Dist., Taoyuan City

Hotline: +886-3-393-8555
www.ftz.com.tw



Official website



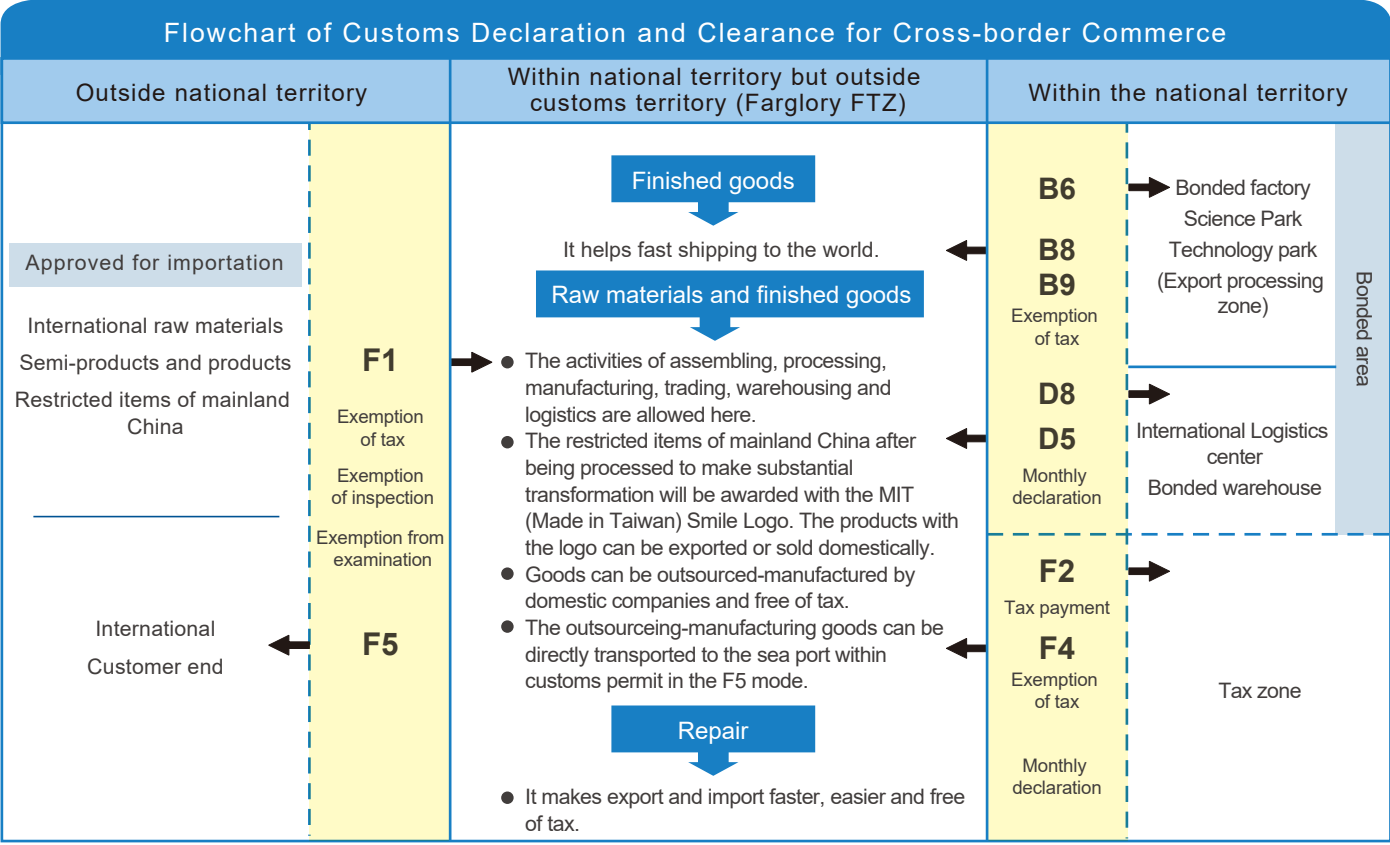
Traffic information



Farglory Free Trade Zone
Flying High, Working Together



Organized by National Development Council
Jointly developed by Civil Aeronautics Administration, MOTC,
Taoyuan International Airport Corp. Ltd., Farglory Free Trade Zone Investment Holding Co., Ltd.



Application form types

F1 : Goods imported from abroad F2 : Goods bound for dutiable areas F3 : Trade within in the FTZ area F4 : Goods from dutiable areas
F5 : Goods export to abroad B6 and D8 : Goods bound for bonded areas B8, B9 and D5 : Goods export from bonded areas

Within the national territory but outside customs line: a special economic zone, located within the national territory but outside customs line provides efficient and expedited export and importing service.

Exemption from inspection and examination: after the application form is submitted via the customs system, the F1 and F5 goods will be exempted from tax and C1 C2 C3-checking of the computer system and released.

Monthly declaration: goods can be moved all day within the national territory. All applications shall be submitted to customs together before the 15th of the next month.

Outsourcing manufacturing: tax-free goods can be outsourced without deposit and tax. The outsourcing-manufacturing scope and ratio are more generous.

Applicable industry: trade, warehousing, logistics, supply chain management, simple assembling, re-arrangement, deep processing or manufacturing.

Port Business Exclusive Tax-free Goods and Scope		
Tax-free scope	Tax-free items	Summary of incentive measures
5% of business tax	Goods for operating use	0% tax for raw materials, semi-products and products from abroad or from home to the FTZ port for operating use
	Machinery equipment	0% tax for all machinery equipment from abroad or from home to the FTZ port for operating use
	Labor service	0% tax for all labor and logistic service provided by the vendors in the port area
Tariff and commodity tax	0% import duty for goods from abroad	
Trade promotion service fee	0% trade promotion service fee for goods from aboard to the FTZ and from the FTZ to other countries	
20% of profit-seeking enterprise income tax	Profit-seeking enterprises, which engage only in preparatory or auxiliary business activities within the territory of the ROC and direct or delegate a Free Trade Zone (FTZ) Enterprise to conduct procurement, importation, storage or delivery of goods, have applied for and obtained the approval, their respective income from sale of goods shall be exempt from profit-seeking enterprise income tax.	

Tax incentives: free of tariff, commodity tax, business tax, trade promotion service fee and profit-seeking enterprise income tax (on conditions)

Higher level of foreign labor force: for the manufacturing-based industry, the percentage of foreign labor workers can be up to 40%. The labor cost is lower, leading to higher competitiveness.

Single administrative contact window: the dedicated personal helps with preparing documents obtaining operating certificates.

High self-management by the FTZ enterprises : the customer clearance system and e-account book are established to manage goods and reduce the administrative management from customs.



Multiple functions

1 Value-added park

The first FTZ with in Taiwan territory and outside the customs line provides marine and air freight service. Goods can be shipped to the world in 2 days while the FTZ enterprises can outsource goods for processing to increase value, enjoy expedited customs clearance, tax benefits and lower labor costs.

2 Air cargo termianl

It serves both customs warehouse of air cargo for import and export and FTZ goods. The automatic warehousing system and the air cargo volume it deals with is the highest in Taiwan.

3 Warehouse and forwarder's building

It can be the office for air cargo-related business or the warehouses of other companies.

4 Express cargo warehouse

There are express warehouses, express cargo warehouses and logistics centers to provide global delivery and custom clearance services.

5 Cold chain warehouse

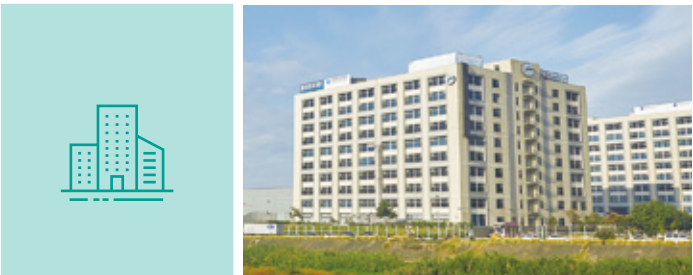
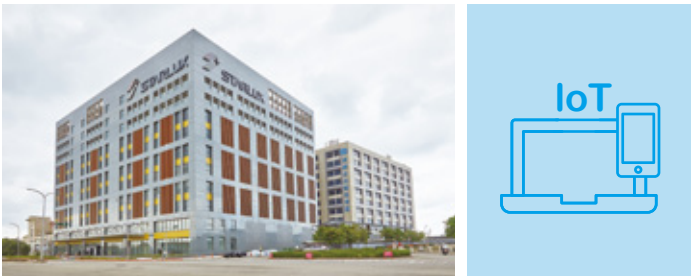
This warehouse is a multi-functional storage space with global certification for handling of pharmaceutical cargo and cold chains to improve the competitiveness of the domestic cold chain industry.

6 Integrated international logistic center

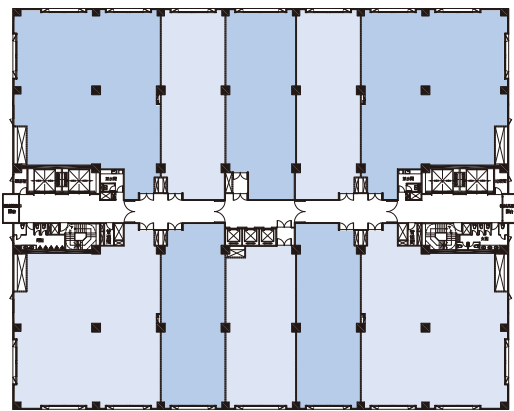
It is a planned cross-border e-commerce area to attract more foreign logistics vendors.

7 Customized area

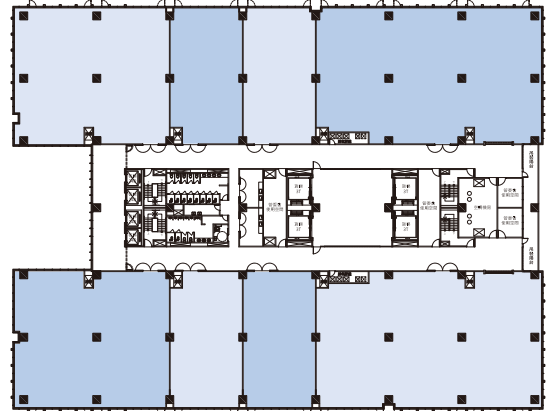
This area is customized for DHL, KWE, Starlux and semi-conductor plants to increase the operating flexibility and competitiveness.



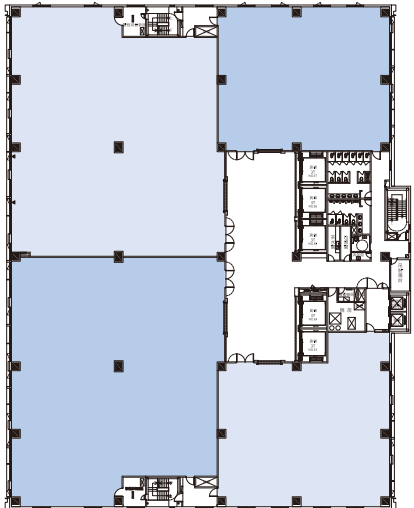
Building	A、B	H	C、D、E、F
Total households	196 households	72 households	93 households
Main structure	Re-inforced concrete	Re-inforced concrete	Steel construction
Level height	1F 460cm 2-10F 380cm	1-9F 540cm	1F 840cm 3.5F 720cm 2.4.6.7.8F 530cm
Unit area	85-99 ping, 180-183 ping	114-117 ping, 250-360 ping	203-219 ping, 404-414 ping
Area per single story	1268-1280 ping	1673 ping	1189-1236 ping
Orientation	North-east, south-west	North-west, south-east	North-west, south-east
Floor load capacity	1F 2T/m ² 2-5F 1.2T/m ² 6-10F 0.8T/m ²	1-9F 1T/m ²	1F 1.5T/m ² 3.5F 1.5T/m ² 2.4.6.7.8F 1T/m ²
Cargo elevator load capacity	2500kg	3000kg	3000kg
Cabin specifications	280*280*230	280*300*320	280*300*320



Floor plan for A and B Buildings



Floor plan for H Building



Floor plan for C, D, E and F Buildings

Full-furnishes: A/C in central system, LED lamps, plastic floor or the floor with hardness finish, painting, balcony for hoisting, fiber to the home, lower current electricity system, first-grade fireproof construction materials, exhaust system, ventilating holes, CCTV in public areas and security patrols (The on-site layout prevails.)